

IMAGING SOFTWARE

# Image-Pro<sup>®</sup> Insight

Image Analysis Made Easy

Capture, Process, Measure, and Share

# Image-Pro<sup>®</sup> Insight

Image Analysis Made Easy

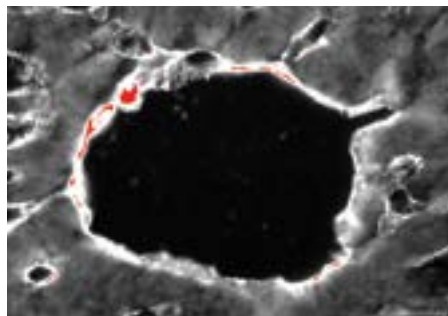
## Capture, Process, Measure, and Share

Image-Pro Insight, the latest image analysis software from Media Cybernetics, offers a wide range of tools for capturing and analyzing images.

Unlike most imaging systems, which require extensive training, Image-Pro Insight was designed for quick startup and ease of use. Utilizing more than 25 years of user input, Image-Pro Insight offers intuitive tools that make it easy to capture and analyze images and extract valuable data from them.

## Capture with Ease

Capturing high-quality images is made easy with a range of acquisition tools. Image-Pro Insight supports an ever-growing list of scientific cameras along with TWAIN (32-bit) acquisition to ensure a superior out-of-the-box capture experience.



### Saturation Warning on Live Preview

Receive an automatic visual cue to prevent you from acquiring saturated images.



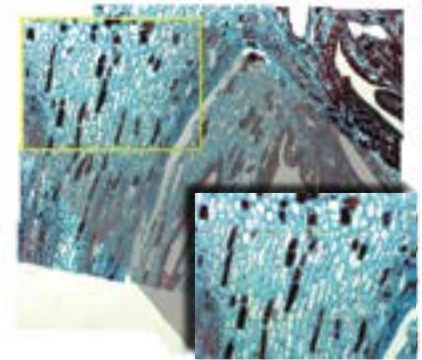
### Live Extended Depth of Field – No Automation Needed

Capture beautifully focused images, regardless of depth, with Live EDF. No automated z motor required.



### Apply High Dynamic Range (HDR) during Capture

More faithfully capture the widest range of intensity present during image acquisition.

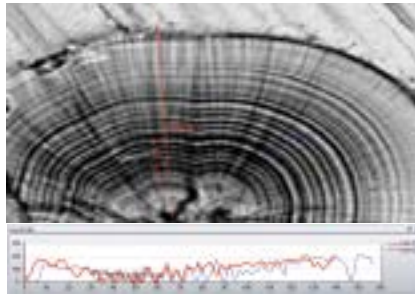
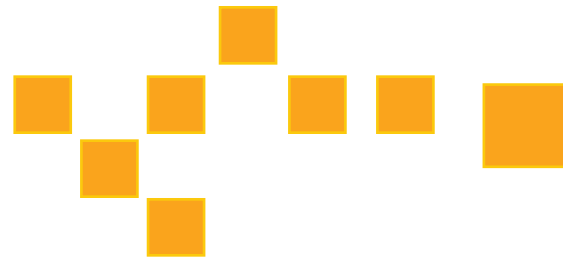
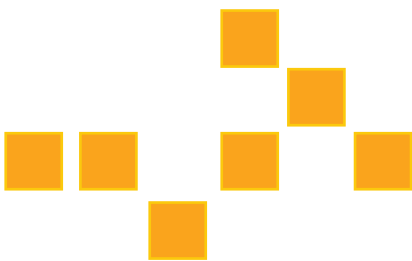


### Live Tiling – No Automation Needed

Stitch together multiple fields of view as you manually move around your specimen with Live Tiling. Combine with Live EDF to create a focused, tiled image. No automated stage required.

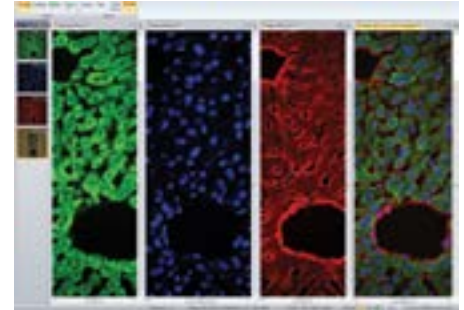
# Process & Analyze

Implement sophisticated image processing and enhancement functions with two clicks or less. Image-Pro Insight offers a wide range of tools that make it easy to analyze and reveal important details within your images.



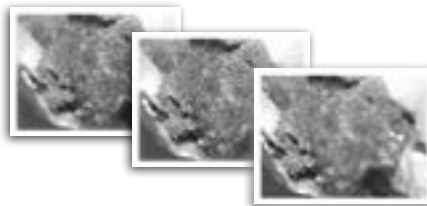
## Analyze with Line Profile

Add multiple line profiles to live or captured images.



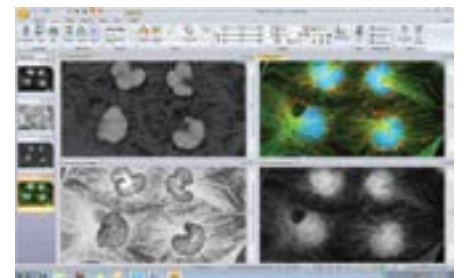
## Create Color Composite Images

Build composite color images by simply right-clicking on each grayscale image to select a color tint.



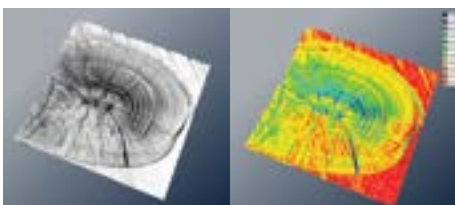
## Auto-align and Apply Extended Depth of Field

Correct for microscope shift with post-acquisition auto-alignment tools. Extended Depth of Focus (EDF) creates a focused image from a series of images captured at different z planes.



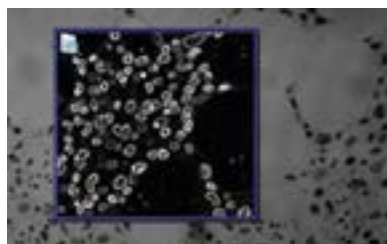
## Extract & Merge Color Channels

Easily combine and separate images into RGB, HSI, and HSL color channels.



## View Image Intensity with Surface Plot

Display a 3D graph of image pixel intensity with the Surface Plot tool. Visualize using texture, color, and wireframe settings, and create instant movies.



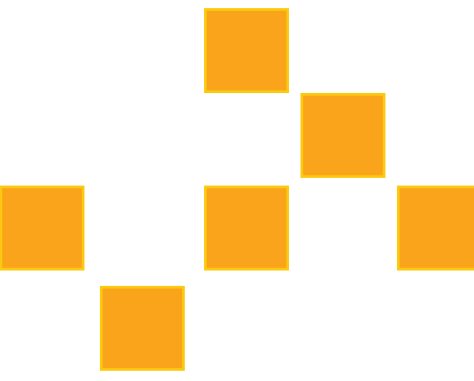
## Correct for Noise & Enhance Detail with Filters

Remove background noise and reveal hidden details with an extensive set of image processing filters. Preview filters on your active image for instant results.



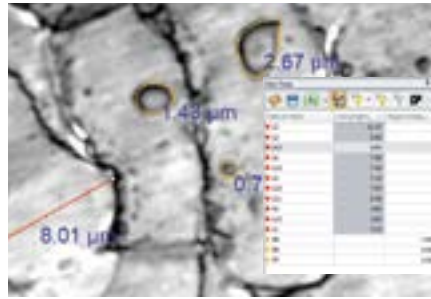
## Navigate & Edit Time-Lapse Images in Gallery View

Navigate through time-lapse and image sequence files with the Gallery View tools.



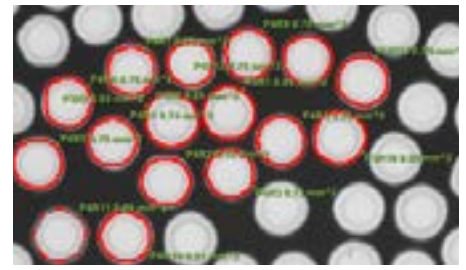
# Measure & Quantify

Extract accurate data from your images with a wide range of measurement tools.



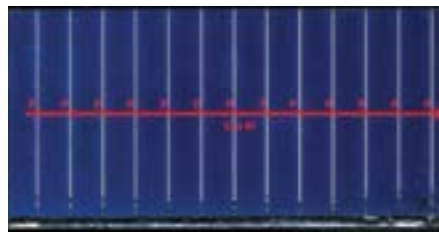
## Classify Measurements

Use different colors, shapes, and custom names to classify and organize your measurement data.



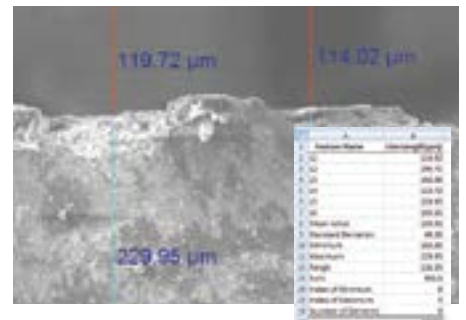
## Apply Semi-automated Measurements

Segment, split, join, shrink and grow objects with just a couple of clicks using the Magic Wand and the Relative Measurement tools.



## Apply Caliper Measurements

Use the Line Profile tool to measure pixel intensity along a line.



## Export Measurement Data to Excel

Export measurements and data graphs to Excel.



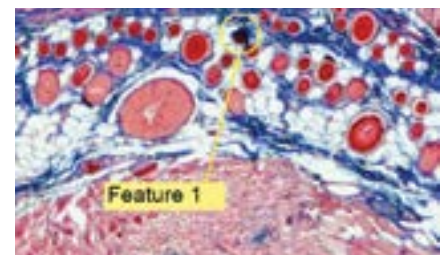
# Report & Share

With Image-Pro Insight, it's easy to present your images and analysis data. Use one-click tools to export images, measurements, and annotations to Microsoft® Excel® as well as to popular presentation programs like PDF, Microsoft Word®, and Microsoft PowerPoint®.



## Create Reports in PDF, Word & Excel

Share your images and data in easy-to-use report templates.



## Annotate Images

Point out features of interest with customizable annotation tools. Easily adjust fonts, colors, shapes, and more. Save these overlays on your images to share with others.

# Join the Image-Pro® Analysis Community

## Get Started with Free Video Tutorials

As an Image-Pro Insight user, you'll have access to a growing library of free 3- to 5-minute video tutorials. Learn time-saving tips and familiarize yourself with the wide range of analysis tools available to you – without ever having to leave your computer.

## Technical Support

Receive installation and configuration troubleshooting from our technical support engineers via phone or email. Purchase an Image-Pro Insight Maintenance Agreement to receive a full year of technical support and software updates.

## Image-Pro Users Email List

When you choose Image-Pro software, you instantly join a community of image analysis professionals. Join the free Image-Pro users email list to ask questions and learn from other users.

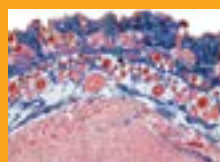
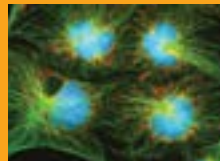
## Upgrade to Image-Pro Premier

If you find your analysis needs growing beyond the tools in Image-Pro Insight, you can easily upgrade to Image-Pro Plus, which offers macro customization, automated counting/sorting, and other advanced options. Contact your local reseller or Media Cybernetics for details.

# Free Video Tutorials

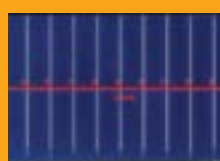
## Designed To Meet Your Requirements

### Life Science Applications



- Anatomy
- Animal Behavior
- Brightfield Microscopy
- Cell Biology
- Dendrochronology
- Developmental Biology
- Entomology
- Fluorescence Imaging
- Food Science
- Marine Biology
- Otolith and Fish Aging
- Pathology
- Time-Lapse Imaging

### Industrial Applications



- Automotive Manufacturing
- Ceramics
- Coatings and Corrosion
- Concrete and Aggregate Analysis
- Cosmetics
- Failure Analysis
- Firearm and Toolmarks
- Forensic Analysis
- Geology
- Material Science
- Metallurgy
- Mineralogy
- Pharmaceutical Development
- Polymers
- Quality Control and Assurance
- Semiconductor Inspection
- Solar Cell Quality Control
- Surface Characterization
- Textile / Fiber
- Trace Evidence

Features Overview	
Capture	
Single frame & movie acquisition	
Live tiling & EDF	
Crosshair grid on live image display	
TWAIN acquisition (32-bit)	
HDR	
Process & Analyze	
Post-acquisition alignment & EDF	
Frame averaging	
Color composite	
Pseudocolor	
Filters – enhancement, edge, large, morphological	
Binary mask	
Sequence / movie editing	
Measure & Quantify	
Advanced line profile analysis	
Semi-automated measurements	
Measure live images	
Snap measurements	
Best-fit measurements	
Classify measurements	
Interactive data table	
Data histogram	
Report & Share	
Annotation tools	
Quick save for publication & analysis	
Export to Excel, PowerPoint & Word	
Reporting tools (including PDF)	
Create snapshot of zoomed view	
Create snapshot with overlays	
View	
Surface plot view & movie creator	
Gallery view	
Lock & zoom multiple images	
Zoomed image navigator	
Full-screen mode	

## System Requirements

### Supported Operating Systems:

Windows® XP SP 3 and later – 32-bit  
 Windows® 7 Professional and Ultimate– 32 & 64-bit  
 Windows® 8 Professional and Enterprise– 32 & 64-bit

### Minimum Requirements

- Dual-core processor or better
- 4 GB of RAM
- 5 GB available on installation drive + free space for images
- DVD-ROM drive
- 1,024x768 display with 32-bit video card
- USB port required for hard licenses and offline license activation
- Internet connection required for online services\*
- Internet Explorer version 9 or higher

### Recommended Requirements

- Quad-core processor or better
- 16 GB of RAM memory or higher
- 20 GB available on installation drive + free space for images
- DVD-ROM drive
- 1,280x800 display with 1GB video card
- USB port required for hard licenses and offline license activation
- Internet connection required for online services\*
- Internet Explorer version 9 or higher

*\*This product may allow you to access certain features that are hosted online (“online services”), provided you have a high-speed Internet connection. The online services include but are not limited to, automatic updates, support links, access to video tutorials, and more.*

*Microsoft .NET Framework 4.0 (automatically installed by application).*

*Specifications are subject to change.*

## Supported File Formats

Description	Extension(s)	Write	Read
TIFF	*.tif, *.tiff	X	X
JPEG	*.jpeg, *.jpg	X	X
JPEG 2000	*.jp2, *.jpf	X	X
BBMP	*.bmp	X	X
PNG	*.png	X	X
Flex Image Transport System	*.fts, *.fts, *.fit, *.fits	X	X
Image-Pro Set	*.ips	X	X
Image-Pro Raw	*.ipraw		X
Image-Pro Sequence Files	*.seq		X
AVI	*.avi	X	X
Windows Media Video	*.wmv	X	X
MPEG 4	*.mp4, *.mov, *.m4v	X	X
BIGTIFF	*.btf	X	X



Media Cybernetics, Inc.  
 North & South America: + 1 301 495 3305  
 Europe, Middle East & Africa: +44 (0)1628 477025  
 China: +(86)21 33773539  
 Asia, Australia, India & New Zealand: + 65 6408 6245  
 Japan: +81 3 5639 2751

[www.mediacy.com](http://www.mediacy.com) | [info@mediacy.com](mailto:info@mediacy.com)

Copyright © 2017 Media Cybernetics, Inc.  
 All rights reserved.  
 Media Cybernetics, the Media Cybernetics logo, and Image-Pro are registered trademarks of Media Cybernetics, Inc. All other trademarks are used with permission and remain the property of their respective owners.